



X2-U3

User's Manual

3.5" SATA DUAL BAY ENCLOSURE



Include

- ☆ Hardware Installation Guide
- ☆ Operation Guide
- ☆ HDD Formatting Guide

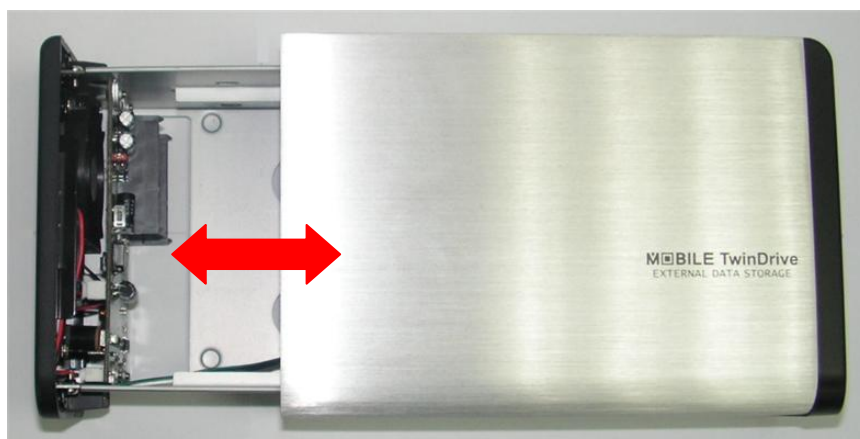
! ATTENTION
New HDD Must Be
Formatted Before Use

Operation Notice: In avoidance of HDD's temperature going too high, be sure to turn on the FAN.

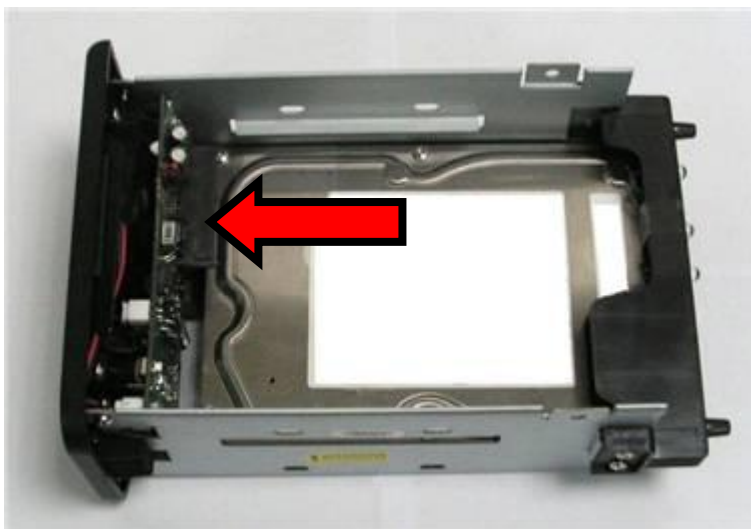
Hardware Operation Guide

Hard Drives Installation Guide

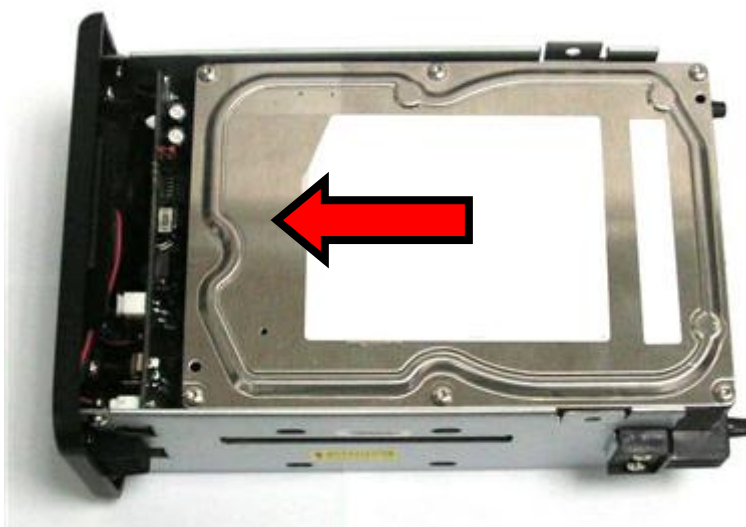
STEP1: Release the 4 screws then pull out the rear panel and tray.



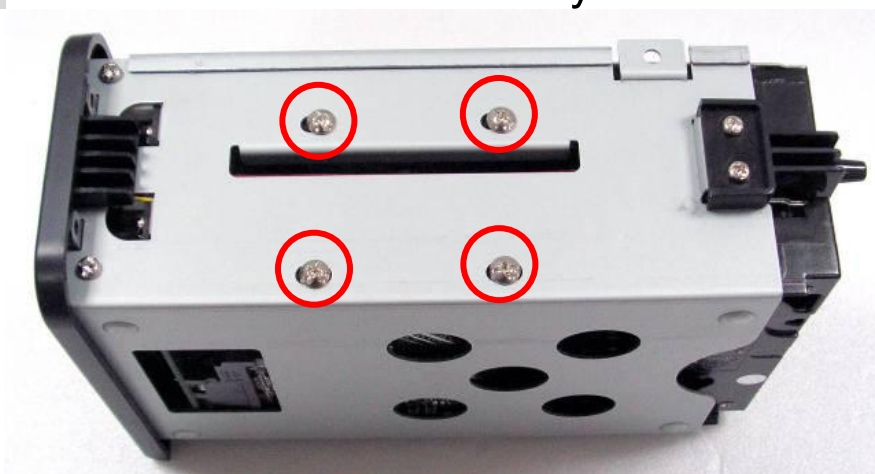
STEP2: Place the first HDD into the tray. Push the HDD to connect the SATA connector.



STEP3: Place the second HDD into the tray. Push the HDD to connect the SATA connector.



STEP4: Screw the HDD on the tray both sides.

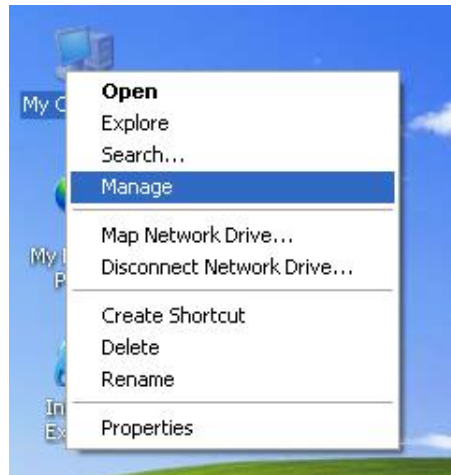


STEP5: Push the tray into the aluminum case. Screw the rear panel and enclosure together.



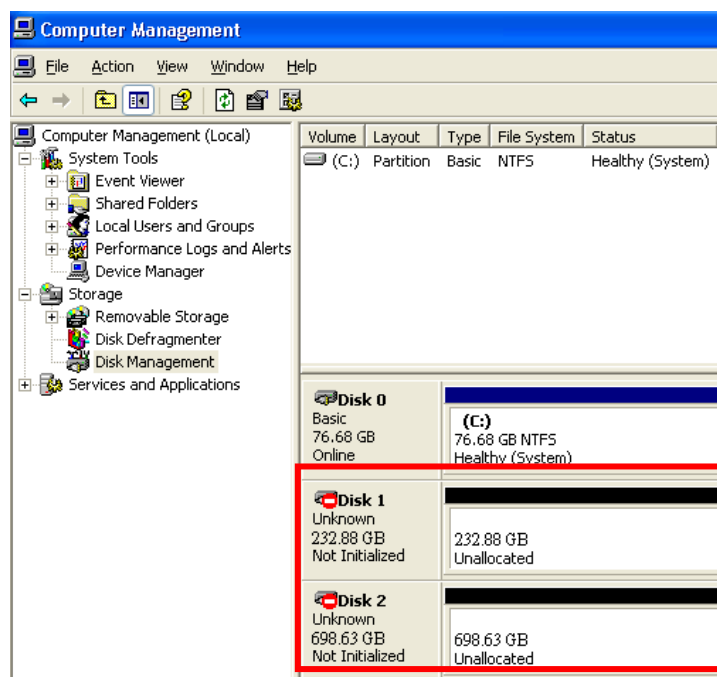
Hard Drive Formatting Guide

STEP1: Right-click on “My Computer” icon and select the “Manage” column.

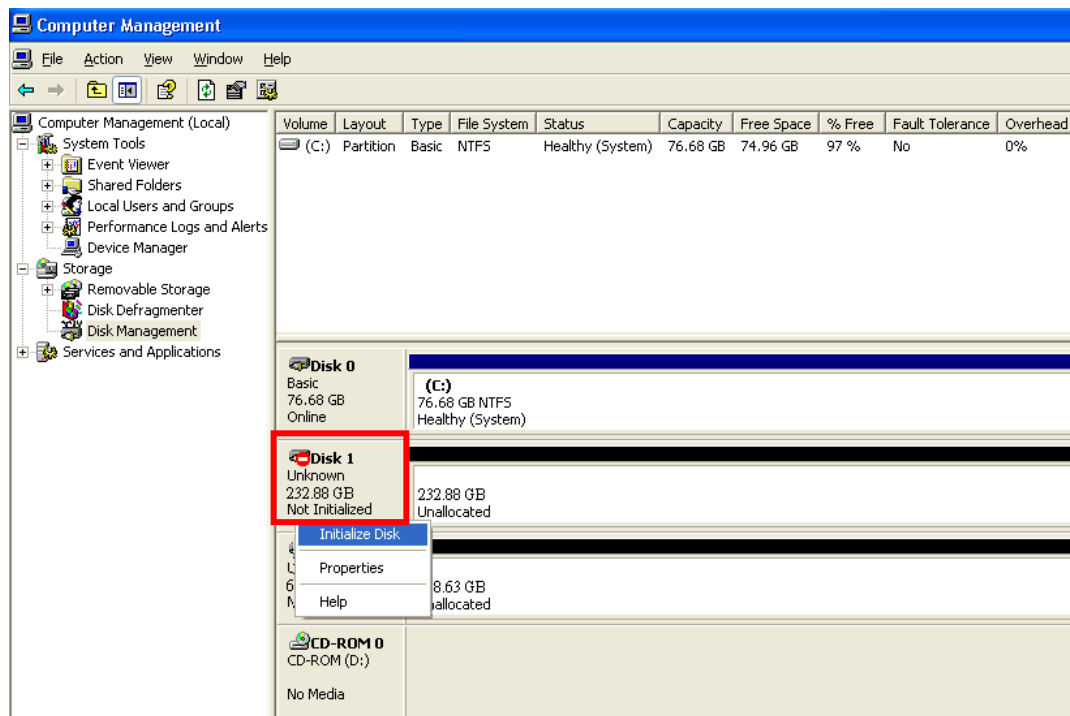


STEP2: Select “Disk Management” and you will see your hard drives show “Unallocated”.

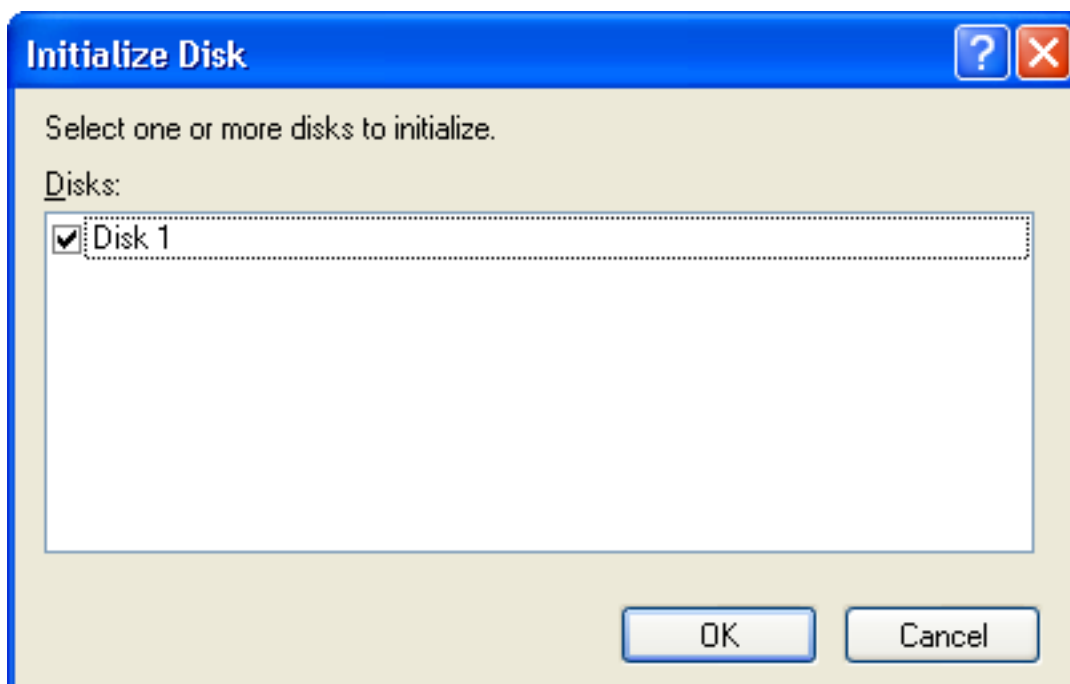
Sample : 750GB & 250GB hard drives.



STEP3: Right-click the red-squared block and selects “Initialize Disk”.

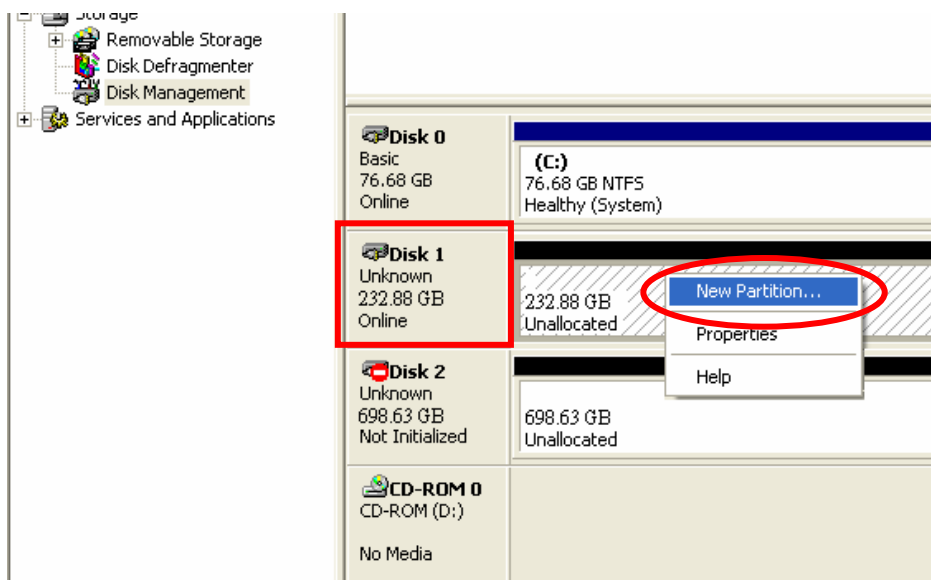


STEP4: Press “OK” button to initialize hard drive.

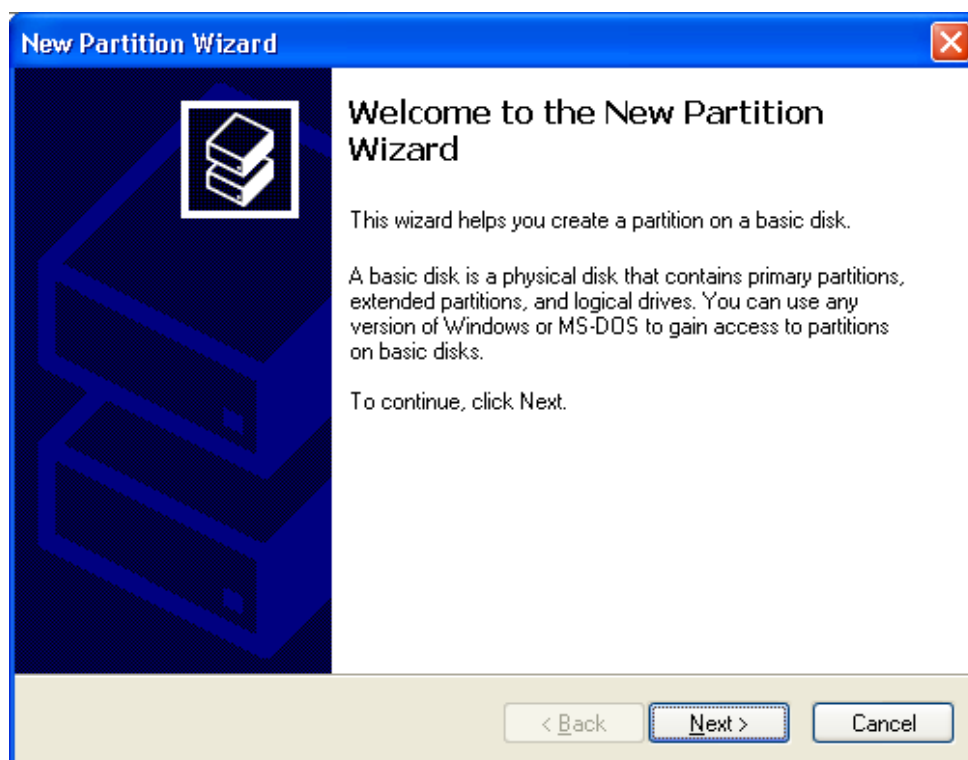


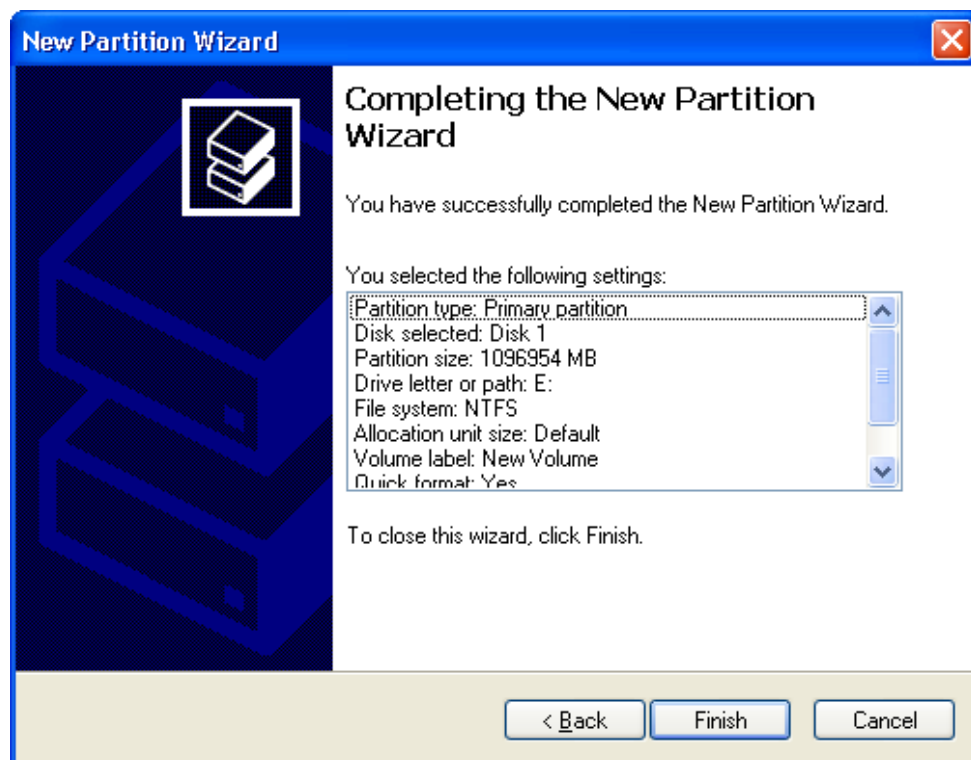
STEP5: The hard drive will show “Online”.

Right-click the “Unallocated” block and selects “New Partition”.

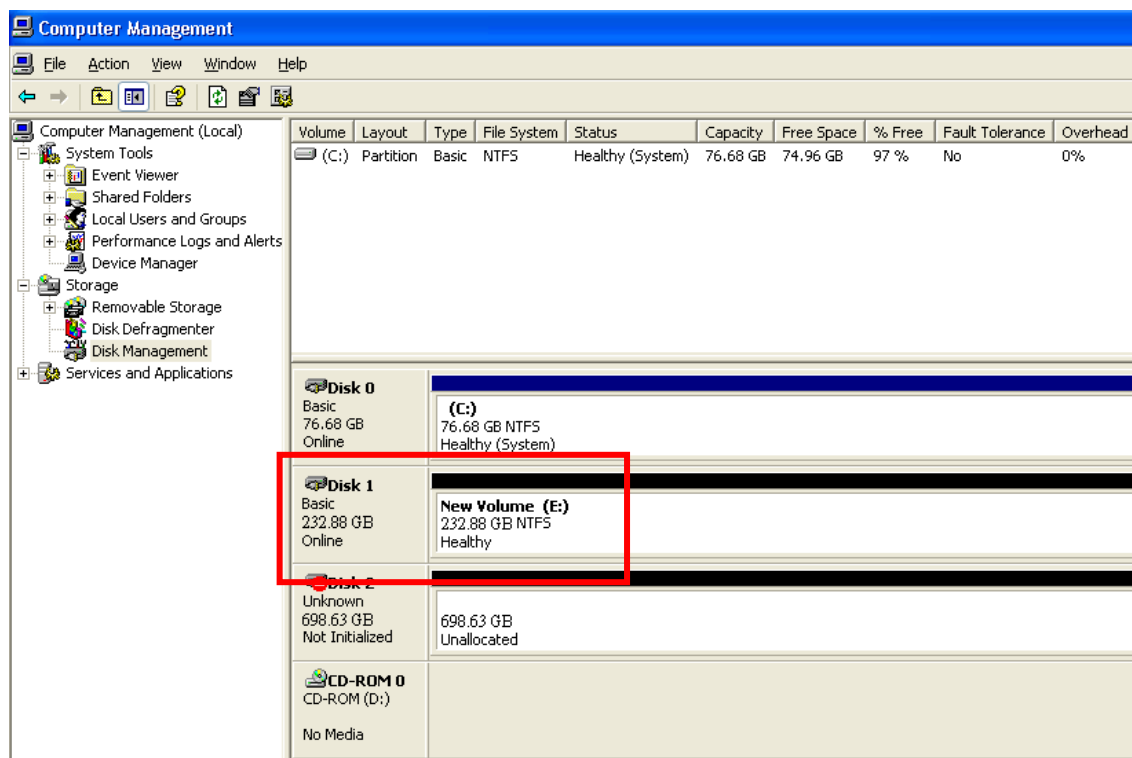


STEP6: The “New Partition Wizard” will appear. Please follow the instruction of the wizard to complete the partition.





STEP7: When new partition is completed, the hard drive will be recognized as a “New Volume”.



STEP8: Format the other hard drive in the same way.